



**Information for
DON26BZ01-NV018 -
Lightweight Beaching
Ramp for Ships
23 April 2026**

Bow Ramp Specifications

134.02.02 Design principle

The bow ramp shall be of an open web construction with longitudinal girders at the outer side. It shall have an anti-slip service. The ramp shall be of foldable construction with hydraulic operated self-adjustable inner finger flaps and outer flaps. The bow ramp shall be operated by 2 hydraulic cylinders, one each side. In closed position, the ramp shall be hydraulically locked. Without hydraulic power, the ramp shall be secured and supported in any position (fail set). In emergency mode (failure of one hydraulic pump), the ramp can be closed with reduced speed.

134.02.03 Main components

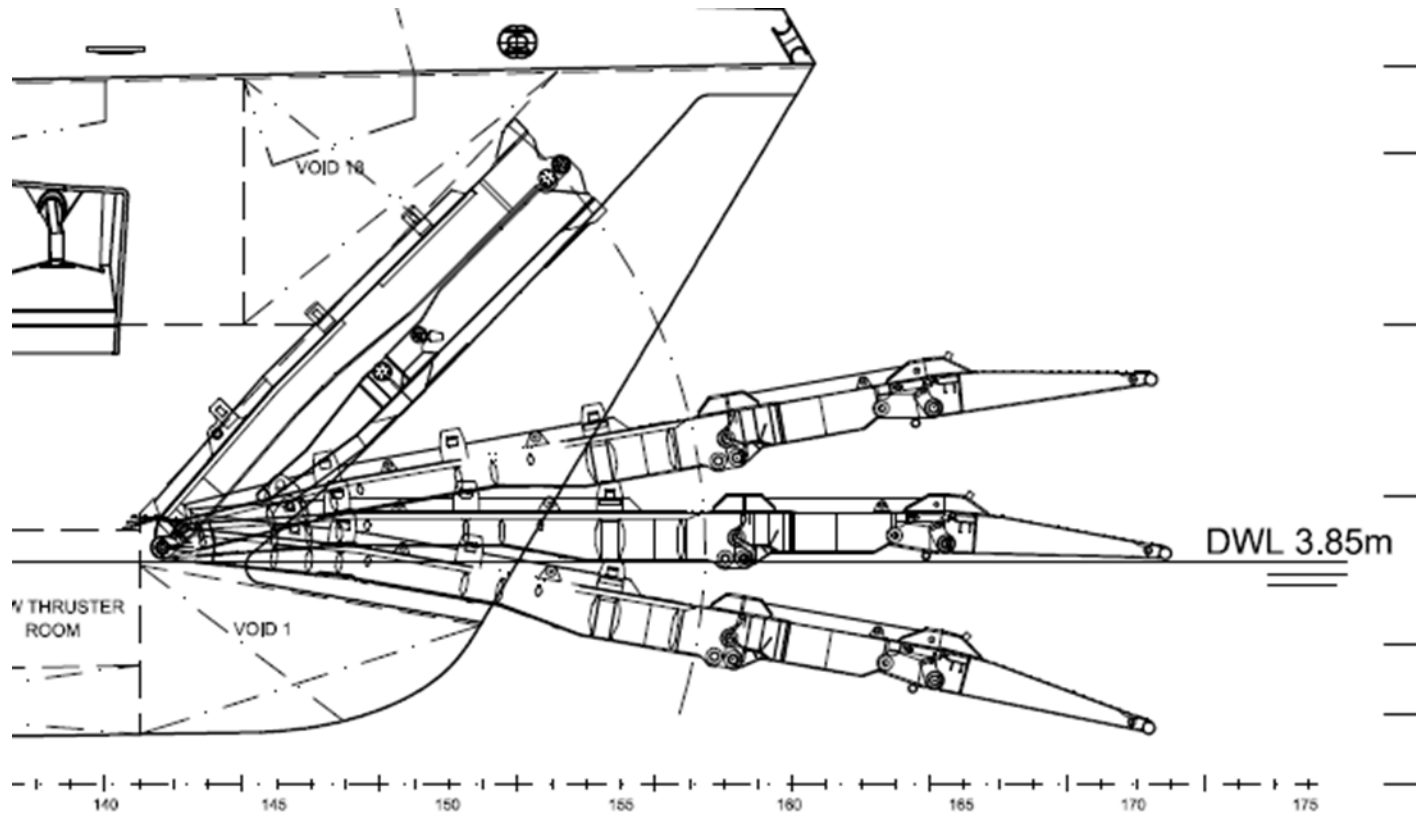
Bow ramp

Operating mechanism	Hydraulic cylinders, Two (02)
Closing type	Weathertight
Load capacity	50 t
Material frame	Steel
Length	Approx. 18 m
Clear width	Approx. 5.0 m
Clear height	Approx. 5.2 m
Ramp slope (max)	+20 / -10 degrees (minus is down)

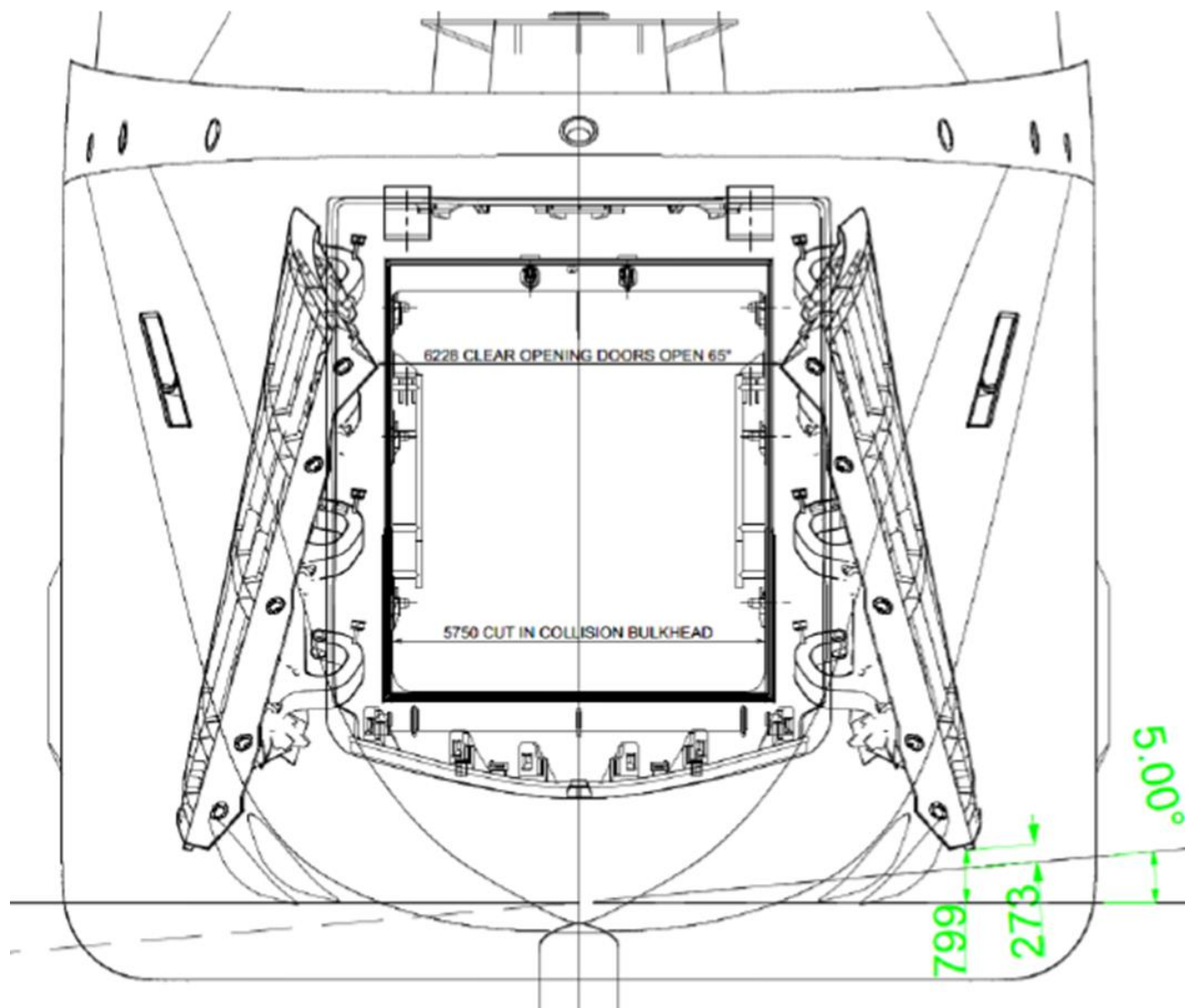
134.02.04 Controls/monitoring/automation

Control and monitoring of the HPU is described in section 611.1. A operating panel is placed near the bow ramp. Additional to the Control/monitoring/automation functionality of the HPU, it presents monitoring of the ramp open/closed and locked status. Additionally, fully closed and locked status is presented in IPMS.

Design Waterline



Bow Door Clearance



Bow Door Clearance

- Frame spacing is 600mm

